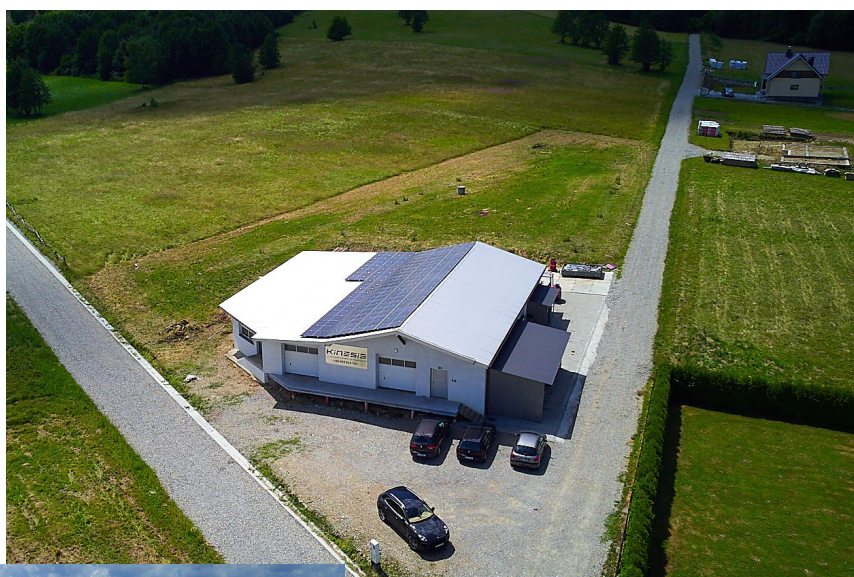




CATALOG

Kinesis company has been operating since 2001, and over the years has strengthened its position on the market, both Polish and European, and the circle of regular customers is constantly growing. The foundation of our company is an energetic sales department, which is happy to answer your questions and provide advice in case of any doubts. We are also vigorously developing the production department, which implements new and innovative ideas to stay ahead of the rapidly developing rehabilitation market. The service department is available to help you with any problems with our equipment.

We are also a distributor of equipment from Polish as well as European manufacturers. Thanks to this, in our offer you will find equipment that will meet the needs of the most demanding customers. Qualified staff with great reliability does its work - offering our customers selected and proven equipment of the most important brands on the market. The result of these activities is a satisfied customer who makes further purchases. This is the key to Kinesis' success and motivation for further development.



CONTENTS

REHABILITATION TABLES	4
DRAINAGE TABLES	20
TRACTION TABLES	24
UPRIGHTING TABLES	26
CARDIAC UPRIGHTING TABLES	28
TABLES FOR EXERCISE WITH CHILDREN	29
DIAGNOSTICS/ BIOFEEDBACK	30
HOSPITAL BEDS	31
DRY GAS BATHS	34
HYDROTHERAPY	36
CRYOHYDROTHERAPY	41
VIBRATION MASSAGE	42
GAIT TRAINING DEVICES	44
ELECTRIC ROTOR	48
BIOFEEDBACK	49
KINESITHERAPY	50
EQUIPMENT FOR PRACTICE	57
TREATMENT CHAIRS	65
BLOOD COLLECTION CHAIRS	67
CIRCUIT TRAINING	68
SENSORIMOTOR INTEGRATION	73
EXERCISE ACCESSORIES	79
CONTACT DETAILS	



REHABILITATION TABLE PROFI 2 Plus

Rehabilitation table PROFI 2 Plus is used in beauty salons, massages and in physiotherapy offices. It is characterized by a reinforced steel structure and height adjustment with the help of a frame around the base of the table. The headrest of the table with a cutout for the face is smoothly adjustable with a gas spring. PROFI 2 Plus, thanks to its solid workmanship and reinforced frame, will undoubtedly meet the requirements of any physiotherapist. V line or MED I upholstery with Easy Clean system and increased resistance to abrasion is standard equipment of the PROFI 2 Plus table.

TECHNICAL DATA

Bed length: 200cm

Width: 67cm

Weight: 80kg

Max load: 150kg

Height adjustment in range: 47-93cm



ACCESSORIES

- trolley system - four swivel wheels
- holder for disposable towels
- 3-part headrest
- massage headrest
- longitudinal cut-out
- holders for attaching stabilizing belts around the top frame of the table
- foot remote control
- hand remote control

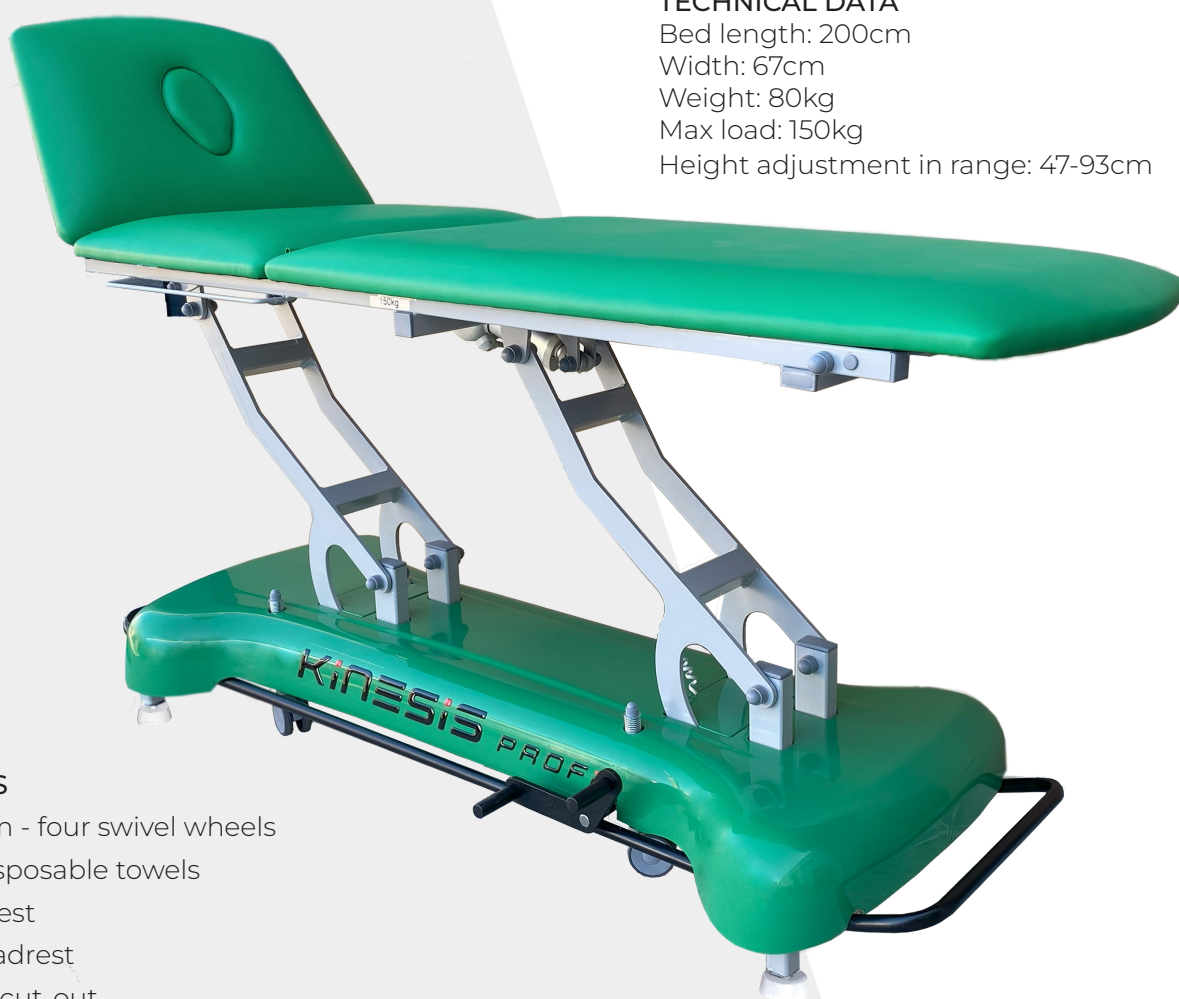


REHABILITATION TABLE PROFI 3 Plus

Rehabilitation table PROFI 3 Plus is used in beauty salons, massages and in physiotherapy offices. It is characterized by a reinforced steel structure and height adjustment with a frame around the base of the table. The sleep surface consists of three segments. Headrest of the table with a cutout for the face, as well as the division and breakage of the sleep surface are adjusted smoothly with a gas spring or, optionally, with an electric actuator. The table, thanks to its robust design and reinforced frame, will undoubtedly meet the requirements of any physiotherapist. V line or MEDI upholstery with Easy Clean system and increased abrasion resistance is standard equipment of PROFI 3 Plus table.

TECHNICAL DATA

Bed length: 200cm
Width: 67cm
Weight: 80kg
Max load: 150kg
Height adjustment in range: 47-93cm



ACCESSORIES

- trolley system - four swivel wheels
- holder for disposable towels
- 3-part headrest
- massage headrest
- longitudinal cut-out
- holders for attaching stabilizing belts around the top frame of the table
- foot remote control
- hand remote control



REHABILITATION TABLE PROFI 3F Plus

Rehabilitation table PROFI 3F Plus is used in beauty salons, massages and in physiotherapy offices. It is characterized by a reinforced steel structure and height adjustment with a frame around the base of the table. The three-segment table top allows a variety of patient positioning in sitting, lying and semi-recumbent positions. The headrest of the table with a cut-out for the face, and the backrest are smoothly adjustable with gas springs. The table, thanks to its robust design and reinforced frame, will undoubtedly meet the requirements of any physiotherapist. V line or MEDI upholstery with Easy Clean system and increased abrasion resistance is standard equipment of the PROFI 3 F Plus table.

TECHNICAL DATA

Bed length: 200cm

Width: 67cm

Weight: 80kg

Max load: 150kg

Height adjustment in range: 47-93cm

Backrest adjustment: 0-85°



ACCESSORIES

- trolley system - four swivel wheels
- holder for disposable towels
- 3-part headrest
- massage headrest
- longitudinal cut-out
- holders for attaching stabilizing belts around the top frame of the table
- foot remote control
- hand remote control



REHABILITATION TABLE PROFI 4 Plus

Rehabilitation table PROFI 4 Plus is used in beauty salons, massages and in physiotherapy offices. It is characterized by a reinforced steel structure and height adjustment with a frame around the base of the table. The bed consists of four segments. This allows to place the patient in a „chair” position. The headrest and sleep surface of the table are smoothly adjustable with gas springs. The table, thanks to its solid construction and reinforced frame, will undoubtedly meet the requirements of any physiotherapist. Upholstery of V line or MEDI with Easy Clean system and increased resistance to abrasion is standard equipment of PROFI 4 Plus table.

ACCESSORIES

- trolley system - four swivel wheels
- holder for disposable towels
- 3-part headrest
- massage headrest
- longitudinal cut-out
- holders for attaching stabilizing belts around the top frame of the table
- foot remote control
- hand remote control

TECHNICAL DATA

Bed length: 200cm
Width: 67cm
Weight: 85kg
Max load: 150kg
Height adjustment in range: 47-93cm



REHABILITATION TABLE PERFECT II

PERFECT II is a table with a 2-part recliner. The user is able to adjust the height from anywhere using a frame placed around the table, as well as with a handheld remote control. Trendelenburg and anti-Trendelenburg longitudinal tilt adjustments are made with the handheld remote control. The ergonomics of such a solution is invaluable when working with a patient. The headrest of the table with armrests (mechanically lowered) and a cutout for the face, is smoothly adjustable with a gas spring. As standard, the table is equipped with a running system, handles for attaching stabilization belts and a hole plug in the headrest.

ACCESSORIES

- disposable towel holder
- 3-piece bolster



TECHNICAL DATA

Length: 203cm
 Height (electrically adjustable with the frame around the table)
 In range: 64-104cm
 Width: 70cm
 Trendelenburg position: 0-25°
 Anti-Trendelenburg position: 0-25°
 Gas spring adjustable headrest in the range: -80° + 45°
 Weight: 96kg
 Maximum load: 150kg



REHABILITATION TABLE PERFECT III

PERFECT III has a 3-part recliner with the necessary amenities for therapists using manual techniques: a headrest with or without armrests (optional) and opening and closing side indentations in the recliner. Electric adjustment of the table (handheld remote control) allows the use of the PIVOTA position. The user can adjust the height from anywhere using a frame placed around the table or with the handheld remote control. Trendelenburg and anti-Trendelenburg longitudinal tilt adjustments are made with the handheld remote control. The headrest of the table, with (or without) mechanically lowered armrests and a cutout for the face, is smoothly adjustable with a gas spring. The backrest of the PERFECT III table is also adjustable. As standard, the table is equipped with a running system, handles for attaching stabilization belts, a face hole plug in the bolster - one-piece bolster.

ACCESSORIES

- disposable towel holder
- 3-piece bolster



TECHNICAL DATA

Length: 203cm
 Height (electrically adjustable with the frame around the table) in range: 64-104cm
 Width: 70cm
 Trendelenburg position: 0-25°
 Anti-Trendelenburg position: 0-25°
 Gas spring adjustable headrest in the range: -80° + 45°
 Adjustable back part to seat position: +85°
 Adjustable middle part angle (Pivot): 45°
 Weight: 125kg
 Maximum load: 150kg



REHABILITATION TABLE CROSS 2

CROSS 2 rehabilitation table is recommended for use in physiotherapy, massage and beauty salons. It is characterized by a simple cross-legged structure equipped with two casters and increased strength up to 200 kg. The headrest of the table is adjustable with a gas spring. V line or MEDI upholstery with Easy Clean system and increased abrasion resistance is standard equipment of CROSS table.

ACCESSORIES

- trolley system
- disposable towel holder
- 3-part headrest
- longitudinal cut-out
- grips for attaching stabilizing belts around the top frame of the table



TECHNICAL DATA

Bed length: 200cm
Width: 67cm
Weight: 55kg
Max load: 200kg
Height adjustment in range: 45-99cm



REHABILITATION TABLE CROSS 3P

CROSS 3P rehabilitation table is recommended for use in physiotherapy, massage and cosmetic surgeries. It is characterized by a simple cross-legged design equipped with two casters and increased load resistance of up to 200 kg. The headrest of the table is adjustable with a gas spring. Folding of the top to the Pivot position is carried out with the help of a gas spring. V line or MEDI upholstery with Easy Clean system and increased abrasion resistance is a standard equipment of the CROSS table.

ACCESSORIES

- trolley system
- disposable towel holder
- 3-part headrest
- longitudinal cut-out
- grips for attaching stabilizing belts around the top frame of the table



TECHNICAL DATA

Bed length: 200cm

Width: 67cm

Weight: 65kg

Max load: 200kg

Height adjustment in range: 45-99cm



REHABILITATION TABLE CROSS 3F

The CROSS 3F rehabilitation table is recommended for use in physiotherapy, massage and beauty salons. It is characterized by a simple crossover design equipped with two casters and increased load capacity up to 200 kg. The headrest of the table is adjustable with a gas spring. Folding of the top to the seat position is carried out with the help of a gas spring. V line or MEDI upholstery with Easy Clean system and increased abrasion resistance is standard equipment of CROSS table.



ACCESSORIES

- trolley system
- disposable towel holder
- 3-part headrest
- longitudinal cut-out
- grips for attaching stabilizing belts around the top frame of the table

TECHNICAL DATA

Bed length: 200cm
Width: 67cm
Weight: 65kg
Max load: 200kg
Height adjustment in range: 45-99cm
Backrest adjustment: 0-85°



REHABILITATION TABLE PRO 3 Plus

Rehabilitation 3-section table with electric bed height change by means of a frame around the table, made of powder-coated steel profiles. The three-segment table top allows a variety of positioning of the patient in sitting, lying and semi-recumbent positions. The positioning of the bolster and back part to the sitting position sitting position is assisted by gas springs. The pivot position is electrically adjustable with a handheld remote control. Equipped with handles for attaching stabilization belts. V line or MEDI upholstery with Easy Clean system and increased resistance to abrasion is standard equipment of the table PRO.

ACCESSORIES

- trolley system - four swivel wheels
- disposable towel holder
- three-piece bolster



TECHNICAL DATA

Length: 203cm

Height (electrically adjustable with the frame around the table) in range: 60-92cm

Width: 70cm

Headrest adjustable by gas spring within the range: $-80^{\circ} + 45^{\circ}$

Adjustable angle of the middle part (Pivot): 45°

Weight: 90kg

Maximum load: 150kg



REHABILITATION TABLE PRO 7

PRO 7 is a 7-piece table designed mainly for massage, which is used in beauty parlors, massage and physiotherapy. PRO series tables are characterized by a reinforced steel structure. The headrest of the table, with mechanically lowered armrests and a cutout for the face, is smoothly adjustable with a gas spring. The PRO 7 table is equipped with a cushion leveling the patient's lumbar lordosis (the height of the cushion is manually adjustable). Such a solution will be appreciated by any physiotherapist, performing massage in his physiotherapy practice. The footrest, adjustable with a gas spring, allows you to relax the muscles of the lower limbs and hip girdle. The PRO 7 massage table is equipped with handles for attaching stabilizing belts. Such equipment of the table, its reinforced frame and solid workmanship will be helpful in performing any type of therapeutic massage. V line or MEDI upholstery with Easy Clean system and increased abrasion resistance is standard equipment of the PRO table.

ACCESSORIES

- trolley system - four swivel wheels
- disposable towel holder
- three-piece bolster



TECHNICAL DATA

Length: 203cm
 Height (electrically adjustable with the frame around the table) in range: 60- 92cm
 Width: 70cm
 Gas spring adjustable headrest in the range: -60°+45°
 Weight: 85kg
 Maximum load: 150kg



REHABILITATION TABLE PRO 3

The PRO 3 rehabilitation table is used in beauty salons, massage and physiotherapy offices. It is characterized by a reinforced steel structure. It is equipped with handles for attaching stabilizing belts. The sleep surface consists of three segments. The headrest of the table with a cutout for the face is smoothly adjustable with a gas spring. This characteristic division and breaking of the recliner are helpful when performing gravity lymphatic drainage. The table, thanks to its robust design and reinforced frame, will undoubtedly meet the requirements of any physiotherapist. V line or MEDI upholstery with Easy Clean system and increased abrasion resistance is standard equipment of the PRO table.

ACCESSORIES

- trolley system - four swivel wheels
- disposable towel holder
- three-piece bolster



TECHNICAL DATA

Length: 203cm
 Height (electrically adjustable with the frame around the table) in range: 60-92cm
 Width: 70cm
 Gas spring adjustable headrest in the range: $-60^{\circ} + 45^{\circ}$
 Adjustable angle of the middle part (Pivot): $+25^{\circ}$
 Weight: 83kg
 Maximum load: 150kg



REHABILITATION TABLE PRO 2

The PRO 2 rehabilitation table is used in beauty salons, massage and physiotherapy offices. PRO 2 is characterized by a reinforced steel structure. It is equipped with handles for attaching stabilization belts. The headrest of the table with a cutout for the face is smoothly adjustable with a gas spring. PRO 2, thanks to its robust design and reinforced frame, will undoubtedly meet the requirements of any physiotherapist. V line or MEDI upholstery with Easy Clean system and increased abrasion resistance is standard equipment of the PRO table.

ACCESSORIES

- trolley system - four swivel wheels
- disposable towel holder
- three-piece bolster



TECHNICAL DATA

Length: 203cm

Height (electrically adjustable with the frame around the table) in range: 60-92cm

Width: 70cm

Gas spring adjustable headrest in the range: -60° + 45°

Weight: 82kg

Maximum load: 150kg



MASSAGE TABLE SM-R7/ SM-E7

SM series are 7-piece tables designed mainly for massage. SM-R7 and SM-E7 are used in beauty parlors, massage and physiotherapy offices. SM series tables are characterized by stable steel construction. The headrest of the table with a cutout for the face is smoothly adjustable with a gas spring. The armrests are mechanically adjustable. The sleep surface of this model is equipped with a cushion that levels the patient's lumbar lordosis. The height of the cushion is manually adjustable. The adjustable footrest in the SM-R7/ SM-E7 allows relaxation of the muscles of the lower limbs and hip rim. The massage table, regardless of the version, is equipped with handles for attaching stabilization belts. V line or MEDI upholstery with Easy Clean system and increased abrasion resistance is standard equipment of the SM table.

ACCESSORIES

- driving system - four swivel wheels (SM-E7)
- foot remote control (SM-E7)
- 3-piece bolster
- height adjustment from 50-100 cm (SM-E7)
- disposable towel holder



VERSIONS

SM-R7 - manual recliner height adjustment.

SM-E7 - electric bed height adjustment

TECHNICAL DATA

Length: 203 cm

Height electrically adjustable in range: 60-92 cm

Width: 70 cm

Gas spring adjustable headrest in the range: -60° +45°

Footrest angle adjustment: 0 +45°

Height adjustment of middle cushion with crank 0-11cm

Adjustment of armrests: 0-20cm

Weight: 64kg

Maximum load: 150kg



REHABILITATION TABLE SR-RL3/ SR-EL3

Rehabilitation 3-part tables SR-RL3 and SR-EL3 are used in beauty parlors, massage and physiotherapy offices. The three-part tables are characterized by a stable steel structure. In the middle part of the table PIVOTA breaking, manually adjustable with a crank. The headrest of the table (optionally with armrests) with a cutout for the face is smoothly adjustable by a gas spring. The table is equipped with handles for attaching stabilization belts. This type of table will be helpful when performing gravity lymphatic drainage. V line or MEDI upholstery with Easy Clean system and increased abrasion resistance is standard equipment of the SR table.

VERSIONS

SR-RL3 - manual change of recliner height.

SR-EL3 - electric bed height adjustment

ACCESSORIES

- driving system - four swivel wheels (SR-EL3)
- foot remote control (SR-EL3)
- 3-piece bolster
- height adjustment in the range of 50 - 100 cm (SR-EL3)
- holder for disposable towels



TECHNICAL DATA

Length: 203 cm

Manually adjustable height: 60-92 cm

Width: 70 cm

Gas spring adjustable headrest in the range: -60° +45°

Weight: 64 kg

Maximum load: 150 kg

Pivot: 0 +25°



REHABILITATION TABLE SR-R2/ SR-E2

Rehabilitation 2-part tables SR-R2 and SR-E2 are used in beauty, massage and physiotherapy offices. The tables are characterized by a stable steel structure. The headrest of the table (optionally with armrests) with a cutout for the face is smoothly adjustable with a gas spring. The table, regardless of the version, is equipped with handles for attaching stabilizing belts. This type of table, its solid workmanship will undoubtedly meet the requirements of any physiotherapist. V line or MEDI upholstery with Easy Clean system and increased abrasion resistance is standard equipment of the SR table.

VERSIONS

SR-R2 - manual recliner height adjustment

SR-E2 - electric bed height change

ACCESSORIES

- driving system - four swivel wheels (SR-E2)
- foot remote control (SR-E2)
- 3-piece bolster
- height adjustment from 50 to 100 cm (SR-E2)
- holder for disposable towels
- long cap



TECHNICAL DATA

Length: 203 cm

Adjustable height: 60-92 cm

Width: 70 cm

Gas spring adjustable headrest in the range: -60° +45°

Weight: 62 kg

Maximum load: 150 kg



MANUAL LYMPHATIC DRAINAGE TABLE CROSS L

Table for manual lymphatic drainage CROSS L, is a 6-piece table with a wide range of movement of individual segments. It is characterized by a reinforced steel structure. This makes it possible to place patient in an ideal position for performing drainage. The headrest of the table is smoothly adjustable with a gas spring. Dividing and breaking the recliner by gas springs. The table, thanks to its solid execution and reinforced frame, will undoubtedly meet the requirements of any physiotherapist. V line upholstery with the Easy Clean system and increased resistance to abrasion is a standard feature of the CROSS L table.

ACCESSORIES

- disposable towel holder
- 3-piece bolster
- holders for attaching stabilizing belts around the top frame of the table
- chassis system

TECHNICAL DATA

Length: 193 cm
Upholstery width: 67 cm
Weight: 75 kg
Max load: 200 kg
Quick height adjustment controlled by remote control in the range: 49-99 cm



MANUAL LYMPHATIC DRAINAGE TABLE PROFI L Plus

PROFI L Plus manual lymphatic drainage table, is an 8-piece table with a wide range of movement of individual segments. It is characterized by a reinforced steel structure. This allows you to place the patient in the ideal position for performing drainage. The headrest of the table is smoothly adjustable with a gas spring. Dividing and breaking the recliner by means of gas springs. Driving system consisting of four casters as standard. The table, thanks to its solid construction and reinforced frame, will undoubtedly meet the requirements of any physiotherapist. V line or MEDI upholstery with Easy Clean system and increased resistance to abrasion is standard equipment of PROFi table.

ACCESSORIES

- disposable towel holder
- 3-piece bolster
- brackets for attaching stabilizing straps around the top frame of the table

TECHNICAL DATA

Bed length: 200 cm
Upholstery width: 67 cm
Weight: 90 kg
Max load: 150 kg
Quick height adjustment controlled by remote control in the range: 47 - 93 cm



POSITIONING DRAINAGE TABLE PROFI D Plus

The PROFI D positioning drainage table is built on the durable and proven construction of PROFI tables, which guarantees durability and comfort. The product is used in health centers and rehabilitation clinics. The bed consists of two segments. The headrest of the drainage table with a cutout for the face is smoothly adjustable with a gas spring, the back part is raised with an electric actuator. V line or MEDI upholstery with Easy Clean system and increased resistance to abrasion is standard equipment of PROFI table.

TECHNICAL DATA

Length: 200cm

Height (adjustable by handheld remote control, option: electrically adjustable by frame around the table) in range: 47-93cm

Lying section adjustable with electric actuator in the range of 0° +15°

Adjustable headrest with gas spring in the range: -45° + 60°

Maximum load: 150kg

Width: 67cm

Weight: 82kg

**ACCESSORIES**

- trolley system - four swivel wheels
- disposable towel holder
- three-piece headrest
- longitudinal cut-out
- holders for attaching stabilizing belts around the top frame of the table
- foot remote control
- manual remote control
- middle segment lifted by hand crank



POSITIONING DRAINAGE TABLE CROSS D

The CROSS D positioning drainage table is characterized by a simple cross-legged design equipped with two casters. The headrest of the table with a cutout for the face is smoothly adjustable with a gas spring. The rear part of the recliner is lifted by an electric actuator. The product is used in health care centers and rehabilitation clinics. The couch consists of two segments. V-line or MEDI upholstery with Easy Clean system and increased resistance to abrasion is standard equipment of CROSS couch standard equipment of the CROSS table.

TECHNICAL DATA

Length: 200cm

Height electrically adjustable with remote control in range: 45-99cm

Width: 67cm

Gas spring adjustable headrest in the range: $-60^{\circ} + 65^{\circ}$

Weight: 75kg

Maximum load: 150kg

Recliner section adjustable by gas spring from $0^{\circ} + 15^{\circ}$



ACCESSORIES

- trolley system - four swivel wheels
- disposable towel holder
- three-piece headrest
- longitudinal cut-out
- handles for attaching stabilizing belts around the top frame of the table

SPINAL TRACTION TABLE SR-T1

Rehabilitation traction table SR-T1 with movable bed, suitable for performing spinal traction procedures. It is used in physiotherapy and rehabilitation offices. The headrest of the table is adjustable in steps with a ratchet mechanism. SR-T1, thanks to its solid workmanship and reinforced frame, will undoubtedly meet the requirements of any physiotherapist. The height of the table is fixed. The product is designed to perform spinal traction procedures, equipped with a traction attachment arm. V line or MEDI upholstery with Easy Clean system and increased abrasion resistance is standard equipment of the SR table.

TECHNICAL DATA

Length 245cm;
Height 70cm;
Width 70cm
Adjustable headrest -45° + 45
Weight: 40kg
Maximum load: 150kg

ACCESSORIES

- disposable paper holder,
- 3-piece bolster
- long cap



SPINAL TRACTION TABLE PROFI 3T

PROFI 3T traction rehabilitation table with movable bed, suitable for performing spinal traction procedures. It is used in physiotherapy and rehabilitation offices. The headrest of the table with a cutout for the face is smoothly adjustable with a gas spring. PROFI 3T, thanks to its solid workmanship and reinforced frame, will undoubtedly meet the requirements of any physiotherapist. Height change by means of the frame around the table. The table is designed to perform spinal traction procedures, equipped with a traction attachment arm. Wide range of available upholstery colors. V line or MEDI upholstery with Easy Clean system and increased abrasion resistance is standard equipment of PROFI table.

ACCESSORIES

- trolley system - four swivel wheels
- disposable towel holder
- 3-piece bolster
- holders for attaching stabilizing belts around the top frame of the table
- foot remote control
- manual remote control

TECHNICAL DATA

Length 265cm
Adjustable table height 47-93cm
Width 67cm
Adjustable headrest -40° + 40°
Weight 85kg
Maximum load 150kg



UPRIGHTING TABLES SP-R/ SP-E1

SP-R, SP-E1 tables are used for uprighting patients after long-term immobilization, paralysis of the lower limbs, numerous post-surgical cases and for the treatment of severe spinal cord injury conditions. The tables can also be used to treat children with postural defects and cerebral palsy. They are designed for patients lying in a hospital, nursing facility or at home for gradual verticalization. The patient can support himself on adjustable handles on both sides of the table. The safety and effectiveness of the tables are ensured by the appropriate design of the product, the use and clinical tests carried out, and the use of safe materials and components in accordance with the requirements of European standards for medical devices. V line or MED1 upholstery with Easy Clean system and increased abrasion resistance is standard equipment of the SP table. Included: 3 stabilizing belts.

TECHNICAL DATA

Overall dimensions (L x W): 201 x 68 cm

Upright recliner height: 204 cm

Adjusting the angle of the recliner with a crank (SP-R) or remote control (SP-E1):

0 to +90°

Weight: 63 kg (SP-R), 65 kg (SP-E1)

Maximum load: 150 kg

VERSIONS

SP-R manual change of table height

SP-E1 electric change of table height



MODEL SP-E1

ACCESSORIES SP-E1

- driving system - four swivel wheels
- foot stabilization - sandals
- foot remote control (SP-E1)
- table fixed to the table

TECHNICAL DATA

Overall dimensions (L x W): 201x68cm

Bed dimensions (L x W): 196x60cm

Height: 85cm

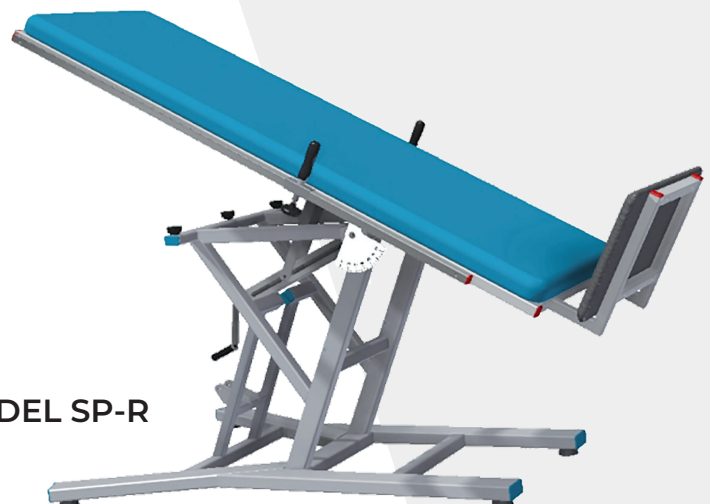
Height of recliner in upright position: 204cm

Adjustable inclination of the couch: from 0 to +90°

Weight: 63kg

Maximum load: 150kg

MODEL SP-R



UPRIGHTING TABLES SP-E2

The SP-E2 uprighting table with electric change of bed angle and height by remote control, is made of powder-coated steel profiles. The SP-E2 tables are used for uprighting patients after long-term immobilization, with paralysis of the lower limbs, numerous post-surgical cases and for treating severe spinal cord injury conditions. The tables can also be used to treat children with postural defects and cerebral palsy. They are designed for patients lying in a hospital, nursing facility or at home for gradual upright positioning. The patient can support himself on adjustable handles located on the side of the table. V line or MED1 upholstery with Easy Clean system and increased abrasion resistance is standard on the SP table. Included: 3 stabilizing straps.

ACCESSORIES

- driving system - four swivel wheels
- foot remote control
- foot stabilization - sandals
- table fixed to the table



TECHNICAL DATA

Overall dimensions (L x W): 201 x 68 cm
Upright recliner height: 204 cm
Height adjustment: 50-90cm
Adjustment of recliner angle: 0 to +90°
Weight: 95kg
Maximum load: 150kg

CARDIAC UPRIGHTING TABLES SP-EK

Uprighting table SP-EK with electric change of bed angle and height by remote control is made of powder-coated steel profiles.

Cardiological upright standing tables are additionally equipped with specialized actuators, which allow quick lifting of the patient to horizontal position.

V line or MEDI upholstery with Easy Clean system and increased resistance to abrasion is standard equipment of the SP table.

Included: 3 stabilizing belts.



ACCESSORIES

- running system - four swivel wheels
- foot stabilization - sandals
- table fixed to the table

REHABILITATION TABLE SR-EB/ SR-RB

Specialized rehabilitation tables for Bobath exercises are one-piece tables. A specially designed structure made of steel profiles ensures very good stability of the table. V line or MEDI upholstery with the Easy Clean system and increased abrasion resistance is standard equipment of the SR table.

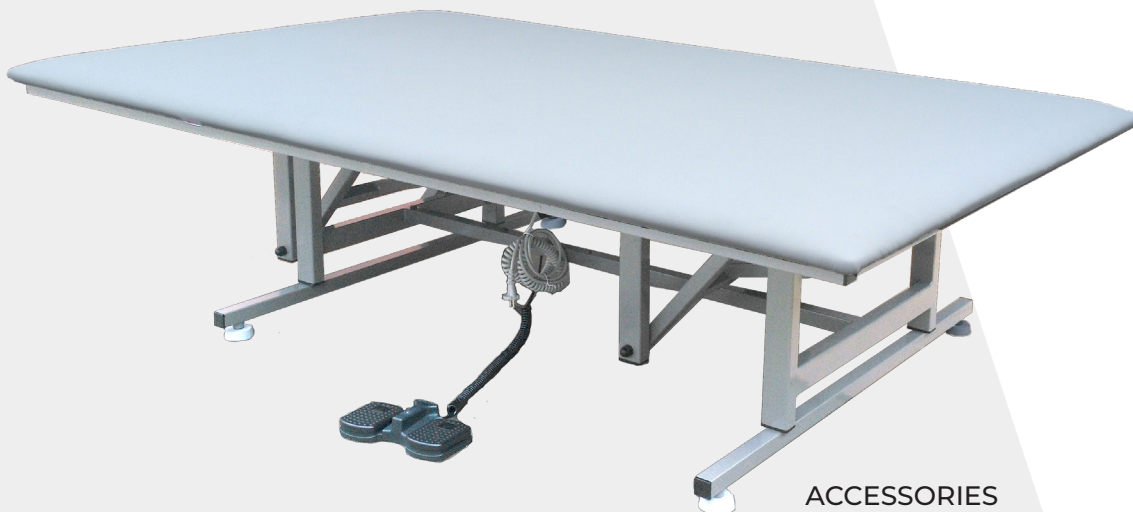


VERSIONS

SR-RB - manual change of the bed height.

SR-EB – electric change of seat height (handheld remote control).

A bed 80 or 100 cm wide



TECHNICAL DATA

Length: 203 cm

Height electrically adjustable via remote control in the range: 60-92 cm

Width: 120 cm

Weight: 86 kg

ACCESSORIES

- running system - four swivel wheels (SR-EB)
- foot control (SR-EB)
- adjustable headrest

BIOMETRICS SET

Biometrics sets are one of the most modern devices, on the one hand used for general assessment of the patient's condition by determining joint mobility and muscle condition, and on the other hand for exercises using biofeedback.

Biometrics kits consist of many devices that determine the patient's fitness. Then, by launching special games, the patient observes the range of motion and the force involved in performing individual exercises on the monitor screen, thus monitoring progress in rehabilitation on an ongoing basis. Biofeedback has an impact on the psyche of the exerciser, motivating him to increase his effort in performing everyday activities such as:

- independent movement,
- getting up on your own,
- performing hygiene activities independently,
- improved grip and grip,
- increasing muscle strength and endurance,
- increasing the range of motion in the joints,
- increasing eye-hand coordination.

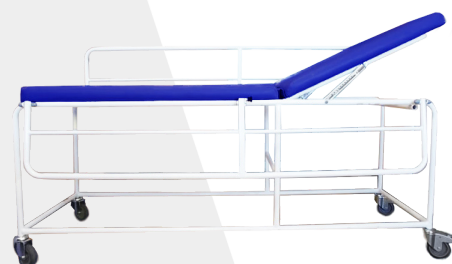
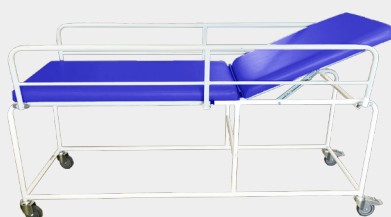


PATIENT TRANSPORT CART KZ-CH

KZ-CH patient transport trolley with fixed height, made of powder-coated pipes. The adjustable, long headrest provides comfortable support. Side-folding railings allow for easy placement of the patient in a wheelchair. The stroller has four swivel wheels, including two with brakes. Upholstery made of leather-like material in MEDI colors or optionally of washable and waterproof material.

**TECHNICAL DATA**

Length 195cm;
Width 71cm;
Height 88.5 cm.



TRANSPORT AND BATHING TRUCK- SW

The TRUCK-SW transport and bath trolley is designed for hygiene or patient transport. Thanks to the bathtub-bed, it is possible to bathe the patient in a lying position (model: TRUCK-SWW). The bathtub is equipped with a water drain. The wheelchair is intended for the care of people with various degrees of disability. In the second option, the transport trolley has a mattress instead of a bed/bathtub (model: TRUCK-SWM) (option: two-section table). Thanks to the hinged side rails, placing the patient on the wheelchair is very easy. The SW model has brakes and large and swivel wheels enabling easy control of the structure. It is equipped with bumpers that protect the walls from damage in the event of contact.

VERSIONS

TRUCK-SWW-option with bathtub

TRUCK SWM - option with mattress

TECHNICAL DATA

Length 205cm
 Height 85cm
 Width 75cm
 Adjustment of long handrails: YES
 Mattress width 64cm
 Bathtub bottom length* 186cm
 Bathtub width* 56cm
 Weight 60kg (+/-3)
 Max load on the bed 180 kg



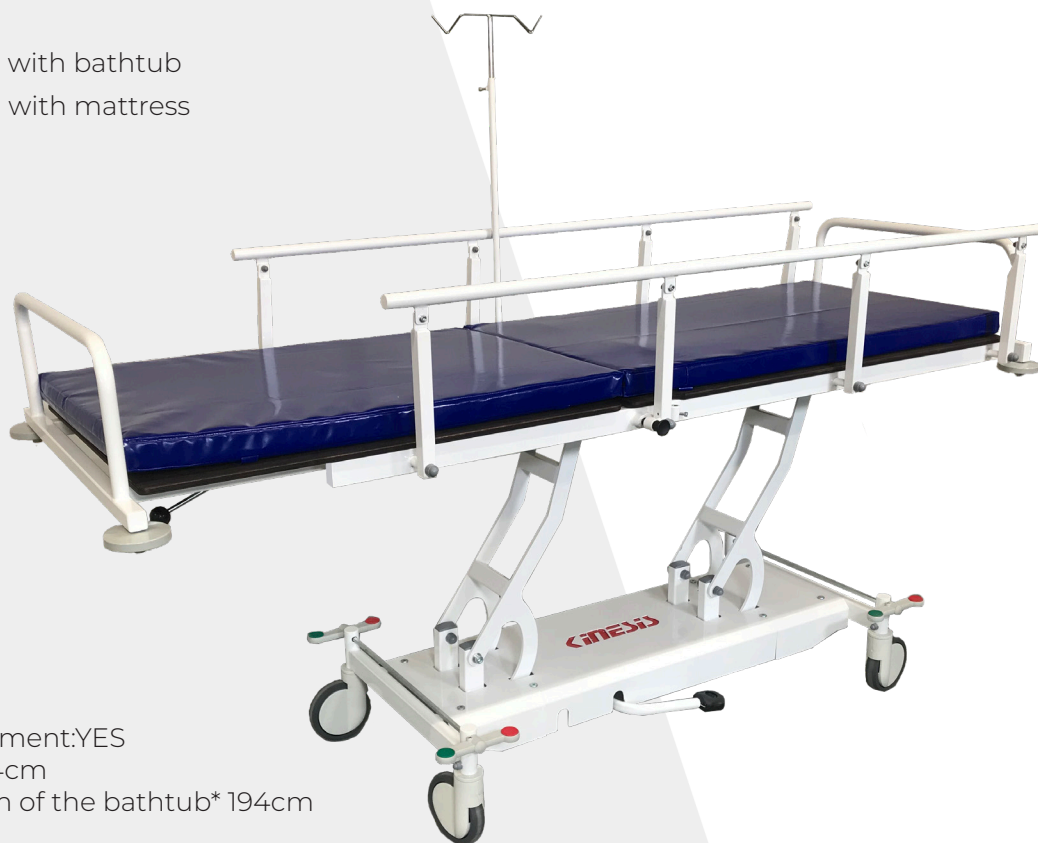
TRANSPORT AND BATHING TRUCK- ZW

TRUCK-ZW transport-bath cart is adapted for hygiene or transport of the patient. Thanks to the reclining tub, it is possible to bathe the patient in a lying position (model: TRUCK-ZWW). The tub is equipped with a water drain. The cart is designed for the care of people with different degrees of disability. In the second option, the transport cart has a mattress instead of a lie-flat bath (model: TRUCK:ZWM) (option: two-section table). Thanks to the tilting side barriers, placing the patient on the wheelchair is very easy. The ZW model has brakes and large and swiveling wheels allow easy control of the structure. They are equipped with bumpers that protect the walls from damage in case of contact. Height adjustment in the ZW wheelchair is carried out using a hydraulic cylinder (option: electric control by remote control).

VERSIONS

TRUCK-ZWW-option with bathtub

TRUCK ZWM- option with mattress



TECHNICAL DATA

Total length 208cm

Height 61-102cm

Width 84cm

Long handrail adjustment: YES

Width of mattress 64cm

Length of the bottom of the bathtub* 194cm

Width of tub* 56cm

Weight 62kg

Max bed load 180kg

Backrest adjustment (for version with ZWM mattress): 0° - 85°

Max load on the bed 180 kg



DEVICE FOR DRY BATH IN CO₂ or O₃ in sitting position DUO DRY JET CABIN

The Duo Dry Jet chamber is the latest product from Kinesis. It is designed for dry carbon dioxide and ozone baths, mainly for people who cannot use traditional wet carbonic acid baths due to their health condition. By using the Duo Dry Jet chamber, the burden of additional hydrostatic pressure on the patient is eliminated. The treatment of „dry” baths does not require the removal of outer clothing and is much simpler than performing traditional baths.

The Duo Dry Jet dry bath chamber is a dual CO₂ and O₃ chamber designed with the latest design and technology. The cabin offers two key functionalities:

- dry CO₂ baths which are a variation of carbonic acid baths ;
- ozoneotherapy, which is an oxygen-ozone mixture treatment.

The Duo Dry Jet seated cabin is available in two variants, with carbon dioxide and carbon dioxide and ozone. With this innovation, the offered chamber has gained a second key functionality over the previous one, while retaining the function offered in full by the previous Carbo Jet device.

The Duo Dry Jet cabin replaces two devices which reduces purchase costs and the amount of space required, gaining the ability to offer a range of treatments based on the health effects of ozone baths and carbon dioxide baths. Choice of colors of MEDI seat material and sealing flange.

TECHNICAL DATA

Length of closed cabin 196cm
Length of open cabin 247cm
Width 88cm
Height 128cm
Weight about 200kg
Max bed load 180kg



DEVICE FOR DRY BATH IN CO₂ or O₃ in lying position DUO DRY JET CABIN

Lying down Duo Dry Jet chamber is the latest product from Kinesis. It is designed for dry and wet carbon dioxide baths. The gas bath treatment does not require the removal of outer clothing and is much simpler than performing traditional baths. The treatment is controlled by the concentration of the gas, rather than the time of flow. This allows significant savings while maintaining the therapeutic properties of the treatments.

The Duo Dry Jet reclining wet and dry bath chamber is a dual chamber designed based on the latest design and technology.

The cabin offers two key functionalities:

dry CO₂ baths which are a variation of carbonic acid baths ;

wet CO₂ baths which are a variation of carbonic acid baths;



TECHNICAL DATA

Length 217 cm

Width 68 cm

Height (closed cabin) 109 cm

Weight 200kg

Full body massage tub AQUANESIS E

AQUANESIS E full body massage tub in a refreshed edition. It provides a very comfortable positioning of the patient during the treatment. The tub is controlled by a simple, reliable electronic system. The filling function takes place automatically. Depending on the model, the tub can be equipped with underwater massage jets and/or a treatment hose for underwater manual massage.

AQUANESIS E bathtub models:

AQUANESIS E/M- bathtub equipped with a hose for underwater manual massage

AQUANESIS E/A - bathtub equipped with 26 jets for water massage and 12 jets for air massage,

AQUANESIS E - bathtub equipped with a hose for underwater massage and 26 jets for water massage and 12 air massage jets

ADVANTAGES OF THE DEVICE

- 3 independent treatment zones (feet, thighs and hips, spine)
- electronic treatment time setting,
- built-in treatment programs,
- massage,
- water massage



Full body massage tub AQUARIUS

Wanna do masażu podwodnego i powietrznego AQUARIUS to kolejna wanna z gamy produktów do hydroterapii. Wanna sterowana jest przez prosty, niezawodny system elektroniczny. Funkcja napełniania odbywa się automatycznie. W zależności od modelu, wanna może być wyposażona w dysze do masażu podwodnego i/lub w wąż zabiegowy do masażu podwodnego ręcznego.

Modele wanien AQUARIUS:

- AQUARIUS M – wanna wyposażona w wąż do masażu podwodnego ręcznego
- AQUARIUS A– wanna wyposażona w 26 dysz do masażu wodnego oraz 12 dysz do masażu powietrznego,
- AQUARIUS – wanna wyposażona w wąż do masażu podwodnego oraz 26 dysz do masażu wodnego i 12 dysz do masażu powietrznego



ADVANTAGES OF THE DEVICE

- 3 independent treatment zones (feet, thighs and hips, spine)
- electronic treatment time setting,
- built-in treatment programs,
- massage,
- water massage



Upper limb whirlpool massage tub AQUANESIS H

AQUANESIS H bathtub designed for whirlpool baths of the upper limbs, is equipped with 10 jets for water massage. It is controlled by a touch panel. It has a thermometer and a hand shower. After the end of the treatment, the tub automatically turns off. The water massage of the upper limbs relaxes the muscles, has an analgesic effect, improves peripheral circulation.



ADVANTAGES OF THE DEVICE

- automatic filling system,
- touch panel control,
- ability to set the treatment time,
- temperature sensor,
- water level sensor,
- shower,
- manual water drain,
- pump lock for „dry” operation

Lower limb whirlpool massage tub AQUANESIS P

AQUANESIS P bathtub is designed for whirlpool baths of the lower limbs. It is equipped with 16 jets for water massage. It is controlled by a touch panel, has a thermometer and a hand shower. After the end of the treatment, the tub automatically turns off. The water massage of the feet and lower legs relaxes the muscles, has an analgesic effect and improves peripheral circulation. The specially profiled basin of the tub allows for a more intensive massage of the lower legs.



ADVANTAGES OF THE DEVICE

- automatic filling system,
- touch panel control,
- ability to set the treatment time,
- temperature sensor,
- water level sensor,
- shower,
- manual water drain,
- pump lock for „dry” operation

Lower limb and spine whirlpool massage tub AQUANESIS BP

AQUANESIS BP is a modern whirlpool bath for lower limbs and spine equipped with 18 jets:

- 4 jets for the lumbar region of the spine
- 2 side jets for the hip area
- 12 jets for the lower limbs
- 1 nozzle for hemorrhoids (optional)
- 2 jets for the knee area (optional)

Thanks to two filling levels, the bathtub allows significant water savings. The tub is controlled by a touch panel, has a hand shower, thermometer, two filling levels and 3 independent zones:

- lower limbs
- spine
- lower limbs and spine



ADVANTAGES OF THE DEVICE

- automatic filling system
- two filling levels,
- 3 independent zones: lower limbs, spine, lower limbs + spine,
- touch panel control,
- possibility to set the treatment time,
- temperature sensor,
- water level sensor,
- shower,
- manual water drain,
- double step for easy entry into the tub,
- optional equipment: 1 nozzle for hemorrhoids
2 jets for the knee area



Kinesis AQUACOLD Set

Kinesis AquaCold is a cryo-hydrotherapy tub system. It was developed in cooperation with the Center Legia LAB research and development center. The AQUACOLD system allows water cooling from +4°C. Bathing in cold water is a form of cryotherapy.

It is ideal for athletes to:

- accelerate muscle regeneration;
- alleviating inflammatory processes;
- reduce discomfort associated with delayed muscle soreness syndrome;
- increasing the performance of the body.

The AQUACOLD device has a very intuitive operating system and does not take up much space. The system can be connected to any of KINESIS' bathtubs.



AQUAPUMP

Aquapump in combination with AQUAVIBRON is a water massage device. The device uses a closed water circuit, which allows for ecological operation (it fills up once), independent of the installation of the water and sewage system. It is fully compatible with the AQUAVIBRON and can be connected to it without additional modifications and loss of properties of the massage apparatus. It is perfectly suitable in hospitals, sanatoriums, wellness or private rehabilitation offices.

ADVANTAGES OF THE DEVICE

- closed water circulation ensures independence from the water supply network,
- thanks to low water consumption, the device is ecological, does not produce waste water,
- the device is protected against electric shock - it has a residual current circuit breaker,
- device functional and easy to use,
- small size with so much power,
- mobility - 4 independent wheels with a brake

TECHNICAL DATA

Height 96,5cm
Width 55,5cm
Depth 46cm
Tank capacity 10l
Power consumption (max) 0,37kW
Power supply 230V/50Hz



AQUABOX

AQUABOX in combination with AQUAVIBRON is a water massage device. Thanks to its design, it guarantees closed water circulation, which ensures ecological and water system-independent operation. The device is compatible with the AQUAVIBRON system. The design in the form of a suitcase allows the device to be easily transported. Made of plastic housing is resistant to damage, and at the same time stylish and handy. AQUABOX is ideal for use in sanatoriums, spas and private rehabilitation clinics.

ADVANTAGES OF THE DEVICE

- closed water circulation ensures independence from the water supply network,
- thanks to low water consumption, the device is ecological, does not produce waste water,
- the device is protected against electric shock - it has a residual current circuit breaker,
- device functional and easy to use,
- small size with so much power,
- mobility - 4 independent wheels with a brake

TECHNICAL DATA

Height 73cm

Width 37cm

Depth 56cm

Tank capacity 5l

Power consumption (max) 0,37kW

Power supply 230V/50Hz



Electric rehabilitation stairs GoStep

The GoStep electric staircase for learning to walk is a very practical solution that allows exercising at different intensities and adding obstacles. A removable railing and an additional ramp make it possible to create a transitional track. Thanks to the accurate profiles, it is possible to add jumps to the structure fixed at any height. The GoStep staircase with track option is a practical solution that makes it possible to perform a wider range of exercises on a single device, which saves office space.

TECHNICAL DATA

Height 110-180cm

Width 87cm

Length of stairs with two ramps: 275cm

Length of stairs with one ramp: 241cm

Length of ramp: 50cm

Width of walking training track: 59cm

Stairway adjustment: 0-19cm

Power supply 230V/50Hz



The GoStep is a Universal Device for UNCL's Activity Learning Locomotion thanks to:

- variable step height;
- unfolding into track position;
- ability to attach obstacles at any height;
- possibility of attaching a relief rail over the stairs;
- allow to perform advanced and a variety of locomotor exercises



Gait training device with dynamic strain relief system WALKER

WALKER is an exercise device for simultaneous control of postural load and balance of the patient's body on a fixed floor or treadmill. It is designed for all patients with lower limb paresis, hemiparesis and when the patient is in general weakness. Particularly useful for geriatric and neurological patients.



TECHNICAL DATA

Height 175-245cm
 Width 77cm
 Length 110cm
 Weight 110kg
 Max load 150kg
 Height adjustment 70cm



Gait training device with dynamic strain relief system LIFTER

LIFTER is a device for simultaneous control of postural relief and balance of the patient's body on a solid surface or treadmill. It is designed for all patients with lower limb paresis, hemiparesis and when the patient is in general weakness. Particularly useful for geriatric and neurological patients. The running system of the device is equipped with 4 directionally locking swivel casters. This allows you to fully control the direction of movement of the device.

ADVANTAGES OF THE DEVICE

- Allows the patient to perform standing up and sitting down, and assists walking according to the body's weight-bearing range.
- Specially designed harnesses in three sizes L, M, S allow individual adjustment to the patient's size so that they do not interfere with training.
- The strain relief is performed by a system of two coupled actuators via a hand-held remote control by the therapist. The amount of strain relief is visible on the monitor, above the patient's head. Stress relief aids walking, and allows the patient to more easily learn correct gait patterns and foot placement when walking. It also helps improve coordination and body balance.



STAIRS FOR LEARNING TO WALK SCHR

Double-sided (two flights of stairs) - I and II degree of difficulty

TECHNICAL DATA

Length: 319 cm

Width: 73 cm

Handrail height adjustment: 67 -107 cm

I STOPIEŃ TRUDNOŚCI:

Step height: 15 cm

Length : 100cm

Number of steps: 3

II STOPIEŃ TRUDNOŚCI:

Step height:: 10 cm

Length 155cm

Number of steps: 5

PODEST:

Length 66 cm

Width 66 cm

Hight: 63 cm



VERSIONS

- 3 I 5-step stair string - model SCHR;

- 5-step staircase string replaced by a ramp - model SCHR/P

GAIT TRAINING TRACK T/ZP AND GAIT TRAINING HANDRAILS T/BP

VERSIONS

-walking training track T/ZP

-walking training handrails T/BP

TECHNICAL DATA

Length: 300 cm

Handrail height adjustment: 63-104 cm

Handrail spacing adjustment: 32-125 cm

Handrail height adjustment:

4 cm; 16 cm; 28 cm

Width of treadmill (T/ZP model): 60 cm



Active and passive upper and lower limb trainer LGT-5100D

The LGT-5100D electric rotor is a device designed for active and passive movement of the lower and upper extremities. It has four training modes (passive training, constant speed training, assisted training and active training) and a spasticity control function. The system can automatically terminate training in three modes: passive training, assisted training and active training, depending on the patient's condition during training.

Clinical purpose: therapy and rehabilitation

Suitable locations: hospital, therapy office, home

The active and passive upper and lower limb trainer is designed to improve motor functions.

TECHNICAL DATA

Dimensions (W × L × H) 710×760×1072 mm

Standard weight 55 kg

Interface Touch screen 8"

Safe working load

Exercise handle (total) 5 kg

Pedal (total) 10 kg

Handlebar 20 kg

Adjustable range

Support module 0-150 mm

Handlebar 180°

Display (max) 270°- 360°



Hand relief system ARMNESIS

ARMNESIS system is designed for rehabilitation in cases of loss of function of the upper limb (neurology, orthopedics). It relieves the therapist of the need to relieve pressure on the upper limb during treatment. The patient's hand is placed in a special ergonomic brace suspended from steel cables. The patient can perform versatile training sets, movements in 3D space. Thanks to the possibility of using biofeedback in visual form, the patient's motivation is higher and the results of therapy are better. The device is designed for rehabilitation of people of different ages and mobility status. Thanks to the dimensions and wide range of adjustment of the arms, it is possible to adjust the device directly under the exercising patient, which ensures better therapy results and greater comfort, both for the patient and the therapist.

ADVANTAGES OF THE DEVICE

- thanks to adjustability- therapy for patients of all ages and levels of disability;
- through the use of biofeedback- better motivation of the patient and exercises in a more exerciser-friendly form (applications of games in pediatric therapy);
- faster return to fitness;
- the possibility of monitoring the progress of therapy on an ongoing basis;
- possibility to perform active and passive exercises



TECHNICAL DATA

Unit height: 188 cm;
Width of exercise arms: 184.8 cm
Width of base: 142 cm;
Mechanical locking arm adjustment;
2 resistance regulators with suspension set
Stable table with adjustable top angle, equipped with magnetic dry-wipe laminate

SLING THERAPY KINESIS

The SLING THERAPY KINESIS system is an innovative exercise program for each patient. The method of weight-bearing exercise with or without resistance used allows for graded effort and resistance during classes. The therapist has unlimited possibilities to conduct classes with the patient. The system gives the possibility of exercises in relief, with resistance, in relief with resistance. The device fully replaces the functions of a traditional UGUL and is respected by the National Health Service as a system that fulfills its role. The ceiling design (full version) gives the possibility to create up to two therapy stations and full patient suspension. The standard version can be installed in the patient's home where rehabilitation can continue. The SLING THERAPY KINESIS system finds its use when supporting the treatment of musculoskeletal disorders. It is most often used in orthopedics, rheumatology, neurology, sports injuries.



SLING THERAPY KINESIS device full set. The ceiling construction gives the possibility to create up to 2 therapy stations and full patient suspension.

PACKAGE CONTENTS:

- SLING THERAPY KINESIS device with 5m cables:
 - 4 pcs. - full set (2 pcs - basic set);
- ceiling construction 1 pcs. - full set (basic set without ceiling structure),
- 5 m rope with 2 blocks - 1 pcs. (full set)
- 60 cm rope - 4 pcs. ,
- rope 30 cm - 2 pcs,
- elastic rope 60 cm (weak resistance) - 2 pcs,
- elastic rope 60 cm (strong resistance) - 2 pcs,
- suspension under the pelvis - 1 pcs,
- suspension under the head - 1 piece,
- femoral suspension: 4 pcs. - full set (2 pcs - basic set),
- loop suspension: 4 pcs. - full set (2 pcs - basic set),
- cord length adjuster: 8 pcs. - full set (4 pcs - basic set),
- metal rod with three hooks 1pc,
- adjustable platform 1pc.

OPTIONS:

- third traverse



SLING THERAPY KINESIS device. Basic set (standard version). Can be used at the patient's home.

UGUL Cabin

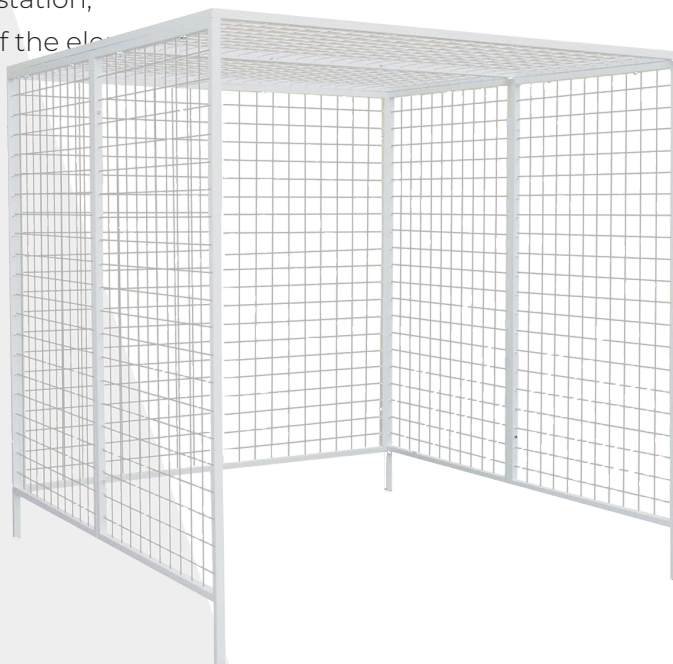
The UGUL is designed for individual kinesiotherapy with the use of a system of exercises in relief, active with resistance, as well as with the possibility of using a Perschl lift. The structure of the cabin is made up of eight osiatic steel grids. In addition, the UGUL can be equipped with limb exercise rotors and accessories.

Available versions:

- UGUL PP double model consisting of 14 gratings,
- UGUL P with overhang - an additional exercise station,
- UGUL D with ladder - the ladder replaces one of the elements,
- UGUL PD - with overhang and ladder

TECHNICAL DATA

Length: 200 cm
Height: 200 cm
Width: 200 cm
Mesh thickness: 6 mm
Weight: 114 kg
Permissible load for one engagement point: 30kg



BEDSIDE REHABILITATION DEVICE PUR

The PUR bedside rehabilitation device is used in the kinesiotherapy room at the patient's bedside. Used in rehabilitation, together with accessories (cables, suspensions, weights, stabilizing belts), it provides the opportunity to perform a number of exercises similar to those in the UGUL. The PUR allows rehabilitation to begin early, along with concurrent primary treatment, resulting in better therapy outcomes.

TECHNICAL DATA

Length: 226-260 cm
Height: 204 cm
Width: 70 cm
Weight: 36 kg



HAND EXERCISE BOARDS KTM and KTM-BO

Boards for manual hand exercises are designed for both adults and children for exercises active assisted. They increase joint mobility and muscle strength of the hand. They are equipped with a set of instruments fixed on a table top of 72 x 52 cm with adjustable height. The KTM resistance board is equipped with 5 x 25 dag soft leather weights. All weights are attached to the cables with the help of sigmoid strips.

The KTM-BO and KTM board are used for active exercises of the hand and forearm.

TECHNICAL DATA

Length: 72 cm

Width: 52 cm

Height: 54-86 cm

Soft leather weights 5 x 25 dkg



ANKLE TRAINING DEVICES

Designed for exercises of the ankle joint: active and with weight in the longitudinal and transverse axis. of the foot. In the PS-K device it is possible to block the rotation of the foot around each of these axes and to apply loads in these directions. The standard equipment of the PS-K device includes an arm and 4 weights (0, 5 kg) properly put on the trays, which allow to intensify the exercises. Thanks to the attachment of the arm, the device gives the possibility to perform assisted exercises of flexion sole and dorsal flexion of the foot.

Ankle training device PS-K



WW-S cutout of a waltz with sandals



WK-S sandal ball cutout



ROTORS

Rotors are designed for active, active with resistance and self-assisted exercises in selected joints. They are used in the departments of kinesitherapy, orthopedics, rheumatology and neurology.

KRB shoulder joint exercise rotor

It is designed for self-assisted active exercises in the shoulder joint.

Adapted for mounting on the UGUL cabin, or wall.

It is possible to smoothly adjust the height of the axis of rotation of the crank, the length of the crank and the resistance.

OPTIONAL EQUIPMENT:

- rehabilitation glove



KRG upper limb joint exercise rotor

Designed for active and self-exploration exercises in the upper extremities.

Recommended in physical rehabilitation.

Adapted for mounting on the UGUL cabin or wall.

ADDITIONAL EQUIPMENT:

- rehabilitation gloves



TECHNICAL DATA

Width: 38 cm

Length: 80 cm

Weight: 3.5 kg

TECHNICAL DATA

Height: 15 cm

Length 40 cm

Crank length 20 cm

Width: 38 cm

Weight 4 kg

KRD lower limb joint exercise rotor

Rotor designed for active and self-assisted exercises in the lower extremities. Equipped with a gripper with adjustable length to allow attachment to any vertical or horizontal element (grating, leg, crossbar at a chair or armchair, post, etc.).

OPTIONAL EQUIPMENT:

- rehabilitation sandals attaching the feet to the pedals.

TECHNICAL DATA

Height: 42 cm

Width: 41 cm

Weight: 4 kg



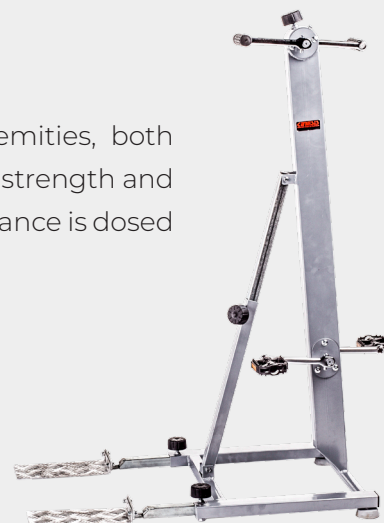
ROTORY

KRDG upper and lower limb joint exercise rotor

The rotor allows simultaneous exercise of the lower and upper extremities, both with and without resistance. Exercises with the rotor help shape muscle strength and improve circulation in the limbs and stimulate the nervous system. Resistance is dosed in a smooth manner through pressure.

TECHNICAL DATA

Length: 51 cm/ 76 cm
Width 48 cm
Arm length: 110 cm
Weight: 17 kg



KRGW upper limb joint exercise rotor

The free-standing upper limb exerciser rotor is equipped with non-slip feet and can be set up for exercise anywhere. It is designed for active and self-assisted exercises in the upper limbs. Recommended in physical rehabilitation. Can be used in hospitals in the departments of kinesitherapy, orthopedics, rheumatology and neurology, as well as at home.

OPTIONAL EQUIPMENT:

- rehabilitation gloves

TECHNICAL DATA

Width 45 cm
Height 50 cm
Length 41 cm
Weight: 4 kg



KRDW lower limb joint exercise rotor

The free-standing rotor is designed for lower limb exercises, is equipped with non-slip feet and can be set up for exercises anywhere. Can be used in hospitals in kinesitherapy, orthopedics, rheumatology and neurology departments, as well as at home.

OPTIONAL

- rehabilitation sandals

EQUIPMENT:

TECHNICAL DATA

Width: 41 cm
Height 51 cm
Length: 55 cm
Weight 4 kg



KINESIS Easy Core Column

Wall-mounted column for dynamic resistance exercise. Can be mounted to a wall or ladder even in small offices. Easy operation allowing independent adjustment of width, height and resistance by the patient. Facilitates work in dysfunctions of the central and peripheral musculoskeletal system. Especially dedicated to postural exercises in spinal pain syndromes. Possibility of sliding and locking in each groove. Hanger for accessories as an integral part of the design.

TECHNICAL DATA

Device dimensions: 180 x 40 x 1.4 cm;

Weight: 20 kg;

9 handle grooves;

2 handles for attaching hoops and rubbers

4 pairs of TUBING SANCTBAND thongs 1m

long with attachment handle and exercise

handle (each pair with different resistance)

4 SANCTBAND rubber hoops with an

attachment handle (each with a different resistance value).



PROFI RESISTANCE EXERCISE CHAIR

The chair is used in therapeutic rehabilitation, for active exercises, without or with resistance, for the upper and lower extremities. The design allows exercises in sitting and lying positions. The device is equipped with two resistance heads and stabilization belts. The use of handles for the stabilization belts enables effective stabilization in the torso and thighs, allowing safe isolated exercises. In addition, it has hooks in the base that allow the attachment of rubber bands and thongs.

TECHNICAL DATA

Length: 165 cm
Width: 100 cm
Height: 157 cm
Backrest height: 89 cm
Backrest adjustment range: 85°-180°
Adjustment range of lower limb support: 0°-90°
Weight: 50kg
Maximum load: 160kg



STOOLS

Stools are an indispensable part of any office. In our offer we have stools with a plastic base in black and with a metal chrome base. Each of them is height adjustable with an actuator. The seats of the stools are covered with easily washable fabric with a choice of upholstery colors. Depending on the model, the stools are equipped with wheels or feet, a footrest, a comfortable backrest that also serves as an armrest.



DANE TECH. MODEL	średnica podstawy	wysokość	średnica siedziska	waga	regulacja podnóż- ka
PL1	60 cm	43-55 cm	34 cm	5,4 kg	-
PL2	60 cm	48-60 cm	34 cm	5,6 kg	-
CH1	62 cm	44-55 cm	34 cm	6,4 kg	-
CH2	62 cm	47-59 cm	34 cm	6,9 kg	-
CH3	62 cm	53-72 cm	34 cm	8,6 kg	20-38 cm
PL3	60 cm	63-87 cm	34 cm	7,5 kg	18-45 cm
PL4	60 cm	63-87 cm	34 cm	11,2 kg	18-45 cm
CH4	62 cm	53-72 cm	34 cm	12,3 kg	20-38 cm

POSTUROGRAPHIC MIRRORS

Posturographic mirrors equipped with braked casters for easy movement of equipment. Used in gymnasiums and fitness centers. Assessment of the patient's posture is facilitated by an applied posturographic grid (model LT-3). In the model with tilting wings - the grid in the middle part.

AVAILABLE MODELS

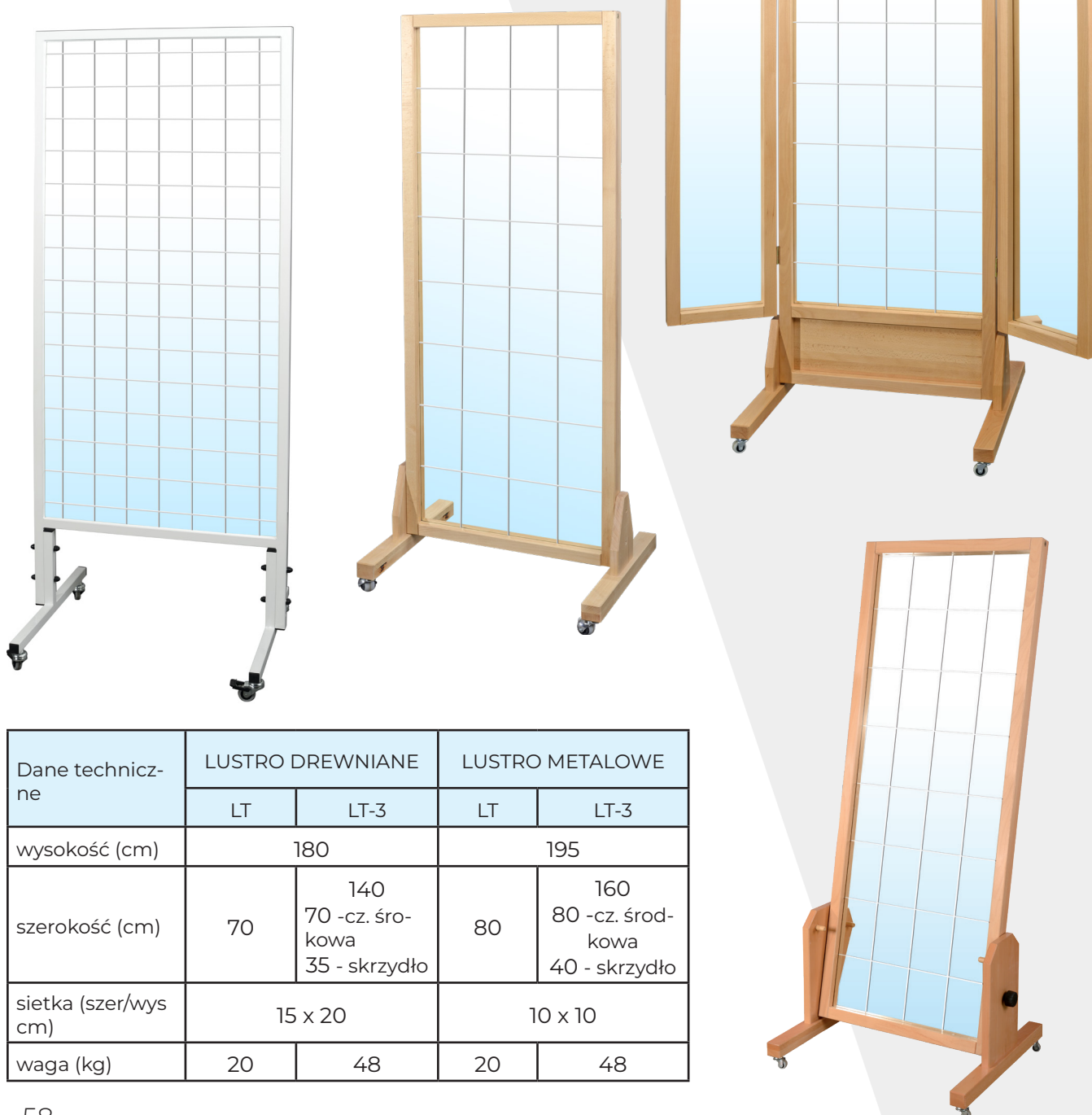
1-part LT (in a wooden or metal frame)

1-part tilting (wooden)

3-part LT-3 (in wooden or metal frame)

color of wooden frame: beech

VERSIONS



Dane techniczne	LUSTRO DREWNIANE		LUSTRO METALOWE	
	LT	LT-3	LT	LT-3
wysokość (cm)	180		195	
szerokość (cm)	70	140 70 -cz. środkowa 35 - skrzydło	80	160 80 -cz. środkowa 40 - skrzydło
sietka (szer/wys cm)	15 x 20		10 x 10	
waga (kg)	20	48	20	48

ROMA couch

ROMA loungers are an ideal product for beauty parlors, SPA & Wellness salons. Lounger ROMA couch is made of beech wood. The height of the couch is adjustable in steps with wooden knobs. Under the couch there is a functional shelf, which can be used to storing cosmetics and utensils necessary for a masseur or physiotherapist.

VERSIONS

- ROMA B/O
- ROMA1 B/O
- ROMA2 B/O
- ROMA 3 B/O



TECHNICAL DATA

Length: 189cm

Width: 67cm

Height adjustable by increments: 63-73cm

Weight: 34kg

Maximum load: 200kg



KLD1, KLD2, KLD3 wooden couches

The couch is made of beech wood. The varied design allows the couch to fit the needs of the physiotherapist. Designed to perform physical therapy treatments. The top is upholstered with leather-like material with high strength parameters, available in a wide range of MEDI colors.

Additional equipment:

- holder for disposable towels.

KLD1**TECHNICAL DATA**

Length: 180cm

Height: 65cm

Width: 61cm

Manually adjustable headrest in the range: 0° or 35°

Weight: 30kg

Maximum load: 200kg

**KLD2****TECHNICAL DATA**

Length: 195cm

Height: 67cm

Width: 66cm

Upholstery height: 7cm

Manually adjustable headrest in the range: 0° or 35°

Weight: 32kg

Maximum load: 200kg

**KLD3****TECHNICAL DATA**

Length: 195cm

Height: 67cm

Width: 66cm

Upholstery height: 7cm

Manually adjustable headrest in the range: 0° - 35° (stepwise)

Weight: 32kg

Maximum load: 200kg

MEDICAL COUCH

KZ medical couch made of powder-coated metal profiles. It is designed for medical examinations and minor medical procedures. It has a wide top and adjustable headrest. The top is upholstered with leather-like material with high strength parameters, available in a wide range of MEDI colors.

TECHNICAL DATA

Length: 177cm

Height: 61cm

Width: 61cm

Adjustable headrest by steps in the range: -60° $+50^{\circ}$

Weight: 30kg

Maximum load: 150kg



KZ medical couch made of powder-coated pipes. It is designed for medical examinations and minor medical procedures. It has a wide top and adjustable headrest. The top is upholstered with leather-like material with high strength parameters, available in a wide range of MEDI colors.

TECHNICAL DATA

Length: 182cm

Height: 51cm

Width: 61cm

Adjustable headrest by steps in the range: -60° $+50^{\circ}$

Weight: 30kg

Maximum load: 150kg



Rehabilitation 2-part table SR-S1 is used in beauty salons, massage and in physiotherapy offices. The table is characterized by a stable steel structure. The headrest is smoothly adjustable with a ratchet mechanism. The table, regardless of the version, is equipped with handles for attaching stabilizing belts. This type of table, its solid workmanship will undoubtedly meet the requirements of any physiotherapist. V line or MEDI upholstery with Easy Clean system and increased abrasion resistance is standard equipment of the SR table.

TECHNICAL DATA

Length: 200 cm

Height: 70 cm

Width: 70 cm

Adjustable headrest by steps in the range: -40° $+45^{\circ}$

Weight: 36.5 kg

Maximum load: 150 kg



WOODEN SCREENS

Screens made of beech wood.

Available in two colors beech and walnut.

They are equipped with casters with a brake. Screens of screens made of fabric, available in different colors.

VERSIONS



One-piece:
Height: 168 cm
Width: 76 cm
Weight: 5 kg

Two-piece:
Height: 168 cm
Width: 140 cm
Weight: 10 kg

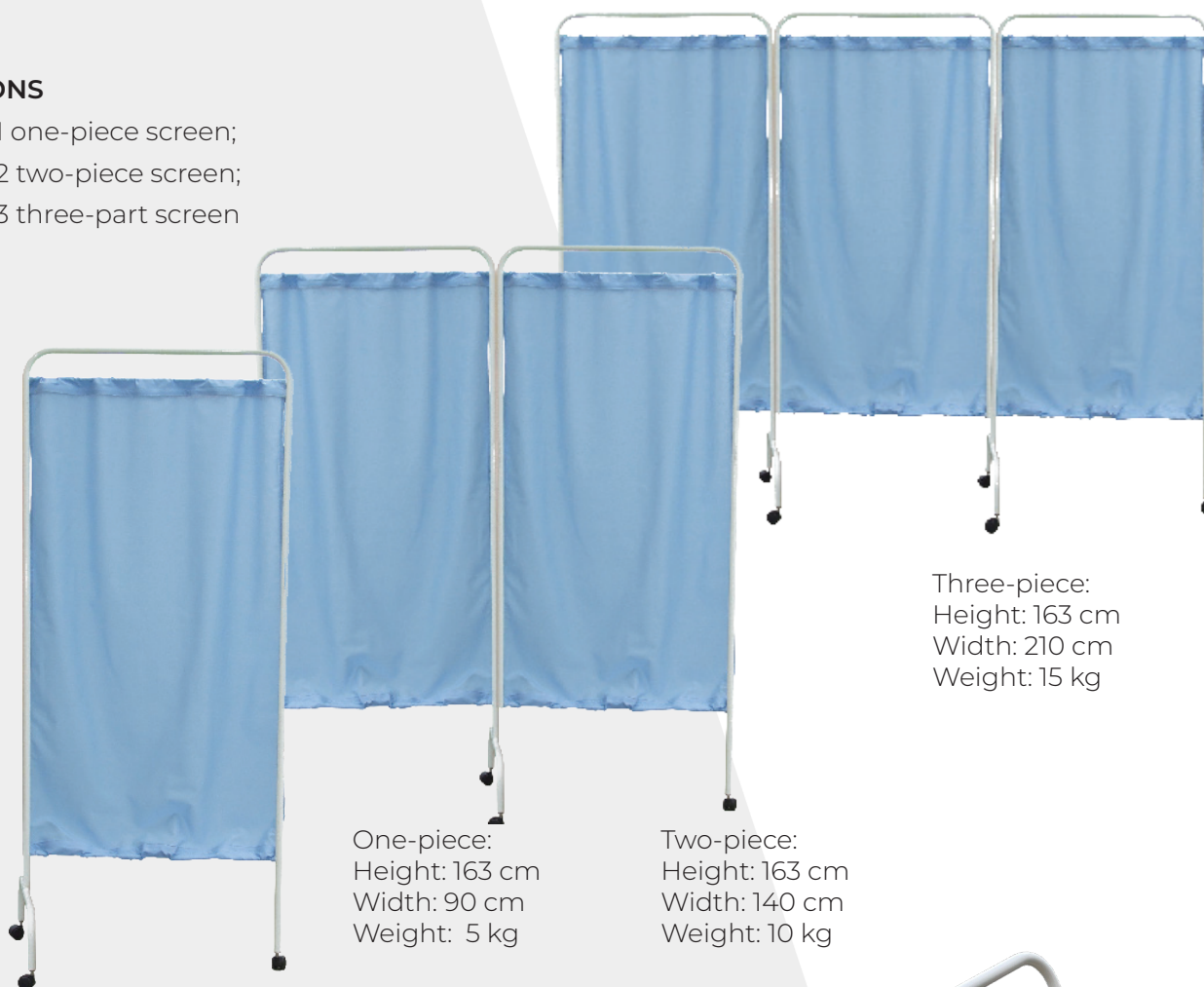
Three-piece:
Height: 168 cm
Width: 210 cm
Weight: 15 kg

METAL SCREENS

Made of metal, the screen is equipped with wheels, which allows the screen to be moved quietly and quickly. It is a basic equipment for halls and offices. Fabric screens available in several color variants.

VERSIONS

- PM1 one-piece screen;
- PM2 two-piece screen;
- PM3 three-part screen



One-piece:
Height: 163 cm
Width: 90 cm
Weight: 5 kg

Two-piece:
Height: 163 cm
Width: 140 cm
Weight: 10 kg

Three-piece:
Height: 163 cm
Width: 210 cm
Weight: 15 kg

METAL STEPS SM1, SM2

Steps available with one or two steps. Useful in any office. They make it easier for the patient to get on and off the table, couch. Equipped with non-slip rubber feet. Metal construction powder-coated in white or gray. Steps covered with anti-slip lining.

VERSIONS

- SM1 one step
- SM2 two steps
- SM2 two steps with railing



ELEGANT TABLE

The physical therapy equipment table is equipped with two shelves, a drawer for accessories, cable holders and casters with brakes that allow the table to be moved effortlessly throughout the office. The table is made of durable materials, elegant and aesthetically pleasing. Stable construction prevents it from accidentally tipping over.

TECHNICAL DATA

HEIGHT: 113 CM
WIDTH: 57 CM
DEPTH: 50 CM
UPPER SHELF: 50X30 CM
BOTTOM SHELF: WIDTH 50X40 CM
DRAWER: 30CM WIDE X 40CM DEEP



ST TABLE

The table for physical therapy apparatuses is equipped with three shelves and casters that allow the table to be moved around the office without any problems. The table is made of durable materials, elegant and aesthetically pleasing on a stable structure prevents accidental overturning.

TECHNICAL DATA

Height: 92cm
Width: 50cm
Top shelf depth: 30cm
Two lower shelves depth: 40cm



EKG TABLE

The ECG table has a functional shelf, a plastic container and a yoke for attaching heads. The arm is adjustable up-down and to the right and left. Four casters provide convenient movement of the table.

TECHNICAL DATA

Height: to shelf: 87m
Dimensions of top: 40x34cm
Permissible shelf load: 8kg



GYNECOLOGICAL CHAIR PERFECT G

Gynecological chair with electric change of reclining height with a frame around the table, made of powder-coated steel profiles. The structure of the gynecological chair is very stable and durable, which ensures the safety and comfort of both the doctor and the patient. It has an adjustable backrest with a comfortable bolster, a removable footrest and knee bolsters adjustable in all planes. It is possible to achieve the reclining, Trendelenburg and anti-Trendelenburg positions in the chair. Standard features include a stainless steel storage bin.ej.

TECHNICAL DATA

Length: 203 cm

Height (electrically adjustable with the frame around the seat) in range: 64-104 cm

Width: 70 cm

Trendelenburg position: 0-25°

Anti-Trendelenburg position: 0-25°

Adjustable backrest angle with gas spring in the range: 0° + 75°

Weight: 125 kg

Maximum load: 150 kg



TREATMENT CHAIR FZ-K

The FZ-K treatment chair is the latest product from Kinesis. The headrest and footrest are adjustable by electric actuators, and the height by an electric column. All elements are controlled by a handheld remote control. The armrests are adjustable. The structure is made of powder-coated steel elements. The unit includes a comfortable bolster. V-line or MEDI upholstery with Easy Clean system and increased abrasion resistance is standard equipment of FZ-K chair.

TECHNICAL DATA

HEIGHT: 50-90CM

WIDTH: 57CM

LENGTH: 192CM (WHEN LYING DOWN)

MAXIMUM LOAD: 150KG



BLOOD COLLECTION CHAIR KF1

The blood collection chair is a product that facilitates a safe and efficient blood collection and injection procedure on the right or left forearm of the person undergoing the procedure. The chair is equipped with adjustable armrests and a table. The base of the chair is made of powder-coated steel tubes. The seat and armrests are upholstered with fabric with Easy Clean system.



TECHNICAL DATA

Total width: 81.5 cm
Total height: 125 cm
Base width: 50 cm
Seat width: 54.5 cm
Seat depth: 40 cm
Backrest height: 78 cm
Backrest adjustment in the range: 50 - 85°
Maximum load: 150 kg
Weight: 14 kg

BLOOD COLLECTION CHAIR KF2

A blood collection chair is a device that facilitates safe and efficient blood collection and injection on the right or left forearm of the person undergoing the procedure. The chair is equipped with adjustable armrests. The blood collection chair is perfect equipment for doctor's offices, medical facilities, clinics and hospitals.



TECHNICAL DATA

Width: 64cm
Total height: 90cm
Backrest height: 40cm
Seat width: 51cm
Seat depth: 45 cm
Size of armrests: 14 x 35 cm
Maximum load: 120 kg

INFANT EXAMINATION TABLE KS1

The infant examination table is a piece of equipment for pediatricians' offices and hospitals. It is designed to perform examinations and nursing procedures. The bed of the infant changing table is upholstered with Easy Clean material, which makes it easy to keep clean. It is equipped with a screw-in adjustment foot, which allows the table to be leveled.



TECHNICAL DATA

Total height: 110 cm
Height to lying surface: 90 cm
Width of top: 103 cm
Depth of the top: 80 cm
Weight: 25 kg

GYMNESIS CIRCLE

GYMNESIS series of circuit training devices dedicated to use in neurological rehabilitation, orthopedics, rheumatology, geriatrics and sports medicine.

The equipment is designed in accordance with the principles of biomechanics and ergonomics, and combines the advantages of strength training while reducing the risk of excessive strain on muscles and joints. The ability to set up the GYMNESIS CIRCLE set in a circle allows a larger group of patients to exercise simultaneously in a small space.



Instead of the traditional load on ropes or rails, a simple principle is used: the load is one's own body. By properly supporting a part of the body, we get leverage for exercise.

Additional load elements can be rubber bands and thongs, which can be attached to the structure of any GYMNESIS CIRCLE device with special hooks.

You can also use additional KINESIS weights of various weights from 0.5 to 4 kg, attached to the wrists or ankles.

GYMNESIS CIRCLE LL

Optimal adjustment of the height of the pelvic support ensures effective exercise of the trunk muscles in the lateral or forward position. The use of rubber bands and straps and wrist weights increases the intensity of the exercise.



GYMNESIS CIRCLE AL

The adjustable platform angle and unique bilateral adjustment of the upper limb supports allow training the abdominal muscles with the lower limbs. The adjustable foot rest levels the activity of the hip flexor muscles. The use of rubber bands and thongs provides the opportunity to exercise the muscles of the chest, shoulder girdle and arms.



GYMNESIS CIRCLE G

Adjustable knee support is used to optimally exercise the gluteal muscles. The use of rubber bands and straps increases the intensity of the exercise



GYMNASIS CIRCLE A

For exercising abdominal muscles with the help of the trunk, there is a special system for adjusting the angle of the platform and the height of the footrest. With the help of rubber bands and thongs, you can increase the intensity of training. Special hooks on the construction of the device also allow you to exercise the shoulder girdle and chest with the help of rubber bands and thongs.



GYMNESIS CIRCLE L

The height and angle adjustments used make it possible to precisely adjust the position of the device to the capabilities and posture of the exercising person. The device allows training of back muscles in the kneeling position. The use of rubber bands and straps, as well as wrist weights, results in increase the intensity of the exercise.



GYMNESIS CIRCLE CT

The device allows exercising the muscles of the chest and shoulder girdle. The exercises increase muscle strength and endurance and improve neuromuscular coordination.



GYMNESIS CIRCLE LT

The device allows exercising the extensors and flexors of the knee joint and the muscles of the lower leg. The exercises increase muscle strength and endurance and improve neuromuscular coordination.



GYMNESIS CIRCLE ST

The device allows exercising the muscles of the shoulder girdle. Exercises increase muscle strength and endurance and improve neuromuscular coordination.



SUSPENSION

U-type and T-type free-standing suspensions are metal constructions made of profiles that allow the suspension of sensomotor integration devices. It is used in rehabilitation centers, schools and institutions that specialize in the therapy of sensory integration disorders using the SI method. The variety of slings predisposes to multi-sensory stimulation. Welded construction, made of powder-coated closed sections.

VERSIONS

- U-type
- T-type

EQUIPMENT:

frame equipped with three points (hooks) for slings

TECHNICAL DATA

Length - 290 cm
Width - 200 cm
Height - 240 cm
Weight - 110 kg



TECHNICAL DATA

Length - 290 cm
Width - 350 cm
Height - 240 cm
Weight - 160 kg

SUSPENDED PLATFORM

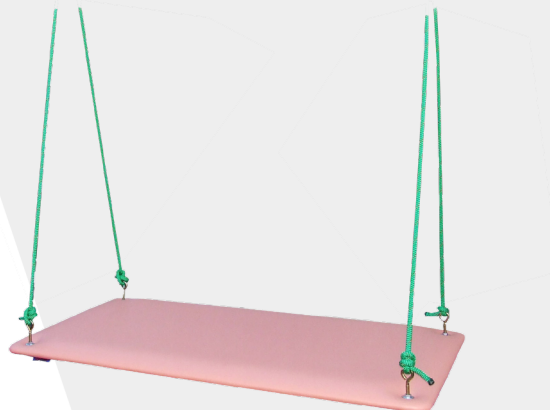
One of the basic devices used in sensomotor integration therapy.

Allows to implement exercises that require linear movement in both longitudinal and transverse axes.

TECHNICAL DATA

Dimensions: 140 x 80 cm

Max load: 100 kg



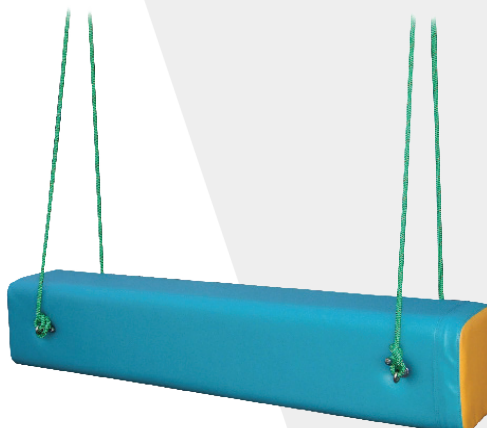
SWING „KONIK”

Swinging Horse supports postural mechanisms, shapes bilateral coordination, orientation in space. It is used for planning movement or developing proximal stability. Provides new movement sensations related to position when exercising.

TECHNICAL DATA

Dimensions: 160 x 30 x 25 cm

Max load: 100 kg



SWING OPONA

The tire swing allows different directions of movement, is designed to stimulate the vestibular and proprioceptive system. It significantly improves motor skills and eye-motor coordination.

TECHNICAL DATA

Outer diameter: 125 cm

Inner diameter : 70 cm

Width : 35 cm

Weight: 9 kg

Max load: 80 kg



SWING „T”

The device is designed to activate flexor work in the rehabilitation of sensory integration disorders for SI therapy. It provides vestibular sensations, allows to exercise eye-hand coordination.

TECHNICAL DATA

Overall height: 80 cm
 Seat length: 85 cm
 Seat width: 20 cm
 Post diameter: 16 cm
 Post height: 60 cm
 Max load: 100 kg



SWING „GRZYBEK”

The most popular form of swing. It is mainly used to practice flexion position and vestibular stimulation in children.

TECHNICAL DATA

Seat diameter: 60 cm
 Cylinder diameter: 20 cm
 Height of seat including cylinder: 75 cm
 Max load capacity : 80 kg

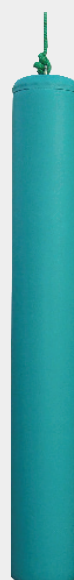


SWING „PARÓWKA”

The Steamer Swing is used for vestibular stimulation, muscle strengthening, improving balance reactions and exercising motor-visual coordination.

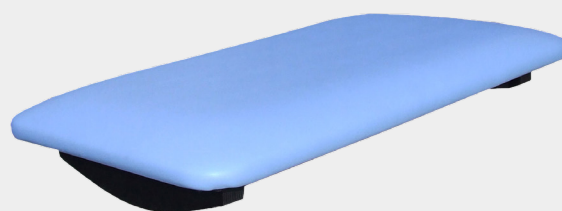
TECHNICAL DATA

Height: 175 cm
 Cylinder diameter: 20 cm
 Height of cylinder: 150 cm
 Max load: 80 kg



BALANCE BEAM/ SKATEBOARD (SMALL, BIG)

It is designed for exercise in all positions. Patients can balance and sway in standing, sitting, kneeling and lying positions. Equipment used to integrate the tonic vagus reflex by strengthening the abdominal upright response and the flexion response on the back. The device is available as a balance beam or skateboard.



Options: SMALL/ BIG

Dimensions: 50 x 80 / 40 x 70 cm

Height: 13 / 10 cm

Skid height: 10 / 7 cm

Max load : 120 kg



BARREL

The device allows simultaneous work on the basic three sensory systems: vestibular, surface sensation, deep sensation. It is used to support the proper regulation of muscle tone, supports the construction of body schema, and shapes the righting response: adjustable, equivalent and defensive support.



TECHNICAL DATA

Outside diameter 60 cm

Outer diameter 40 cm

Length 60 cm

DRY REHABILITATION POLL

Dry rehabilitation pool with floor mat is made of polyurethane foam with increased hardness. It is designed for active rehabilitation and sensorimotor stimulation.

Sizes of available models:

- 250 x 250 x 60 cm
- 200 x 200 x 60 cm
- 200 x 150 x 60 cm
- 200 x 100 x 60 cm
- 200 x 200 x 50 cm
- 250 x 250 x 50 cm



The standard thickness of the pool wall is 30 cm.

It is possible to make a dry pool of other dimensions.

Floor mat in standard equipment.

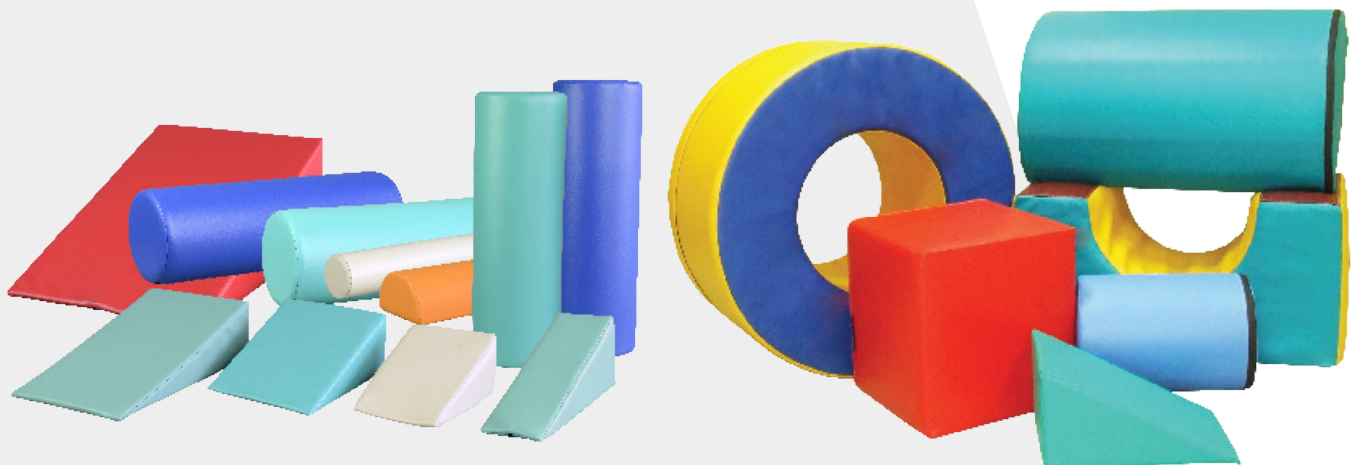
ADDITIONAL EQUIPMENT: plastic balls, stairs with ramp, bridge, half-shaft.

REHABILITATION MOULDINGS

Rehabilitation mouldings made of hard polyurethane foam are designed for physiotherapy treatments and sensorimotor stimulation. They can be used in medical and wellness offices, health centers, and in the patient's home.

The offer includes a wide range of shapers with standard dimensions.

It is possible to manufacture customized shapers.



MATTRESS

Mattresses made of firm polyurethane foam, covered with durable fabric easily washable.

TYPES OF MATTRESSES:

one-piece: MR-1, MR-2, MR-3

two-piece: MR-4

three-piece: MR-5, MR-6

It is possible to order mattresses of non-standard sizes

One-piece mattress

Available sizes:

MR-1 195 x 85 x 5 cm

MR-2 195 x 100 x 5 cm

MR-3 198 x 100 x 10 cm

Two-piece mattress

Available sizes:

MR-4 170 x 65 x 5 cm

Three-piece mattress

Available sizes:

MR-5 195 x 85 x 5 cm

MR-6 195 x 100 x 5 cm



TAPES - HOOPS - THONGS - TUBING BY SANCTBAND COMPANY

KINESIS is the exclusive distributor for the Polish market of the original SANCTBAND rehabilitation tapes made of pure latex. The tapes are designed for exercises that increase strength and muscle mass. They are also used for posture correction.

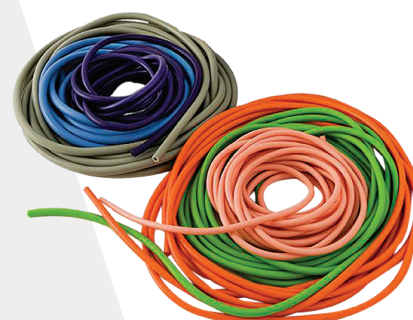


available lengths:

- 1,5 m
- 2,5 m
- 5,5 m
- 46 m

**SUPER-LOOP SANCTBAND****TUBING SANCTBAND**

- peach - resistance extra light
- orange - light resistance
- green - medium resistance
- blue - strong resistance
- purple - extra strong resistance
- gray - super strong resistance

**accessories - tubing holders**

BIURO HANDLOWE KINESIS Andrzej Boruta
Penara Street 23
38-440 Iwonicz-Zdrój
NIP: 684 107 94 34 REGON: 370192926

PRODUCTION, OFFICE, SERVICE
Dworska Street 19
38-430 Miejsce Piastowe

Kinesis
physiotherapy equipment manufacturer

biurokinesis@kinesis.com.pl
tel: +48 695 768 360
+48 661 490 417

serwis@kinesis.com.pl
tel: +48 693 375 977
+48 695 856 283



Manufacturer of physiotherapy equipment

With great care we carry out individual orders, as well as comprehensively supply rehabilitation clinics, hospitals, beauty salons, recreation centers, nursing homes.

Biuro Handlowe KINESIS
Dworska Street 19
38-430 Miejsce Piastowe
Poland

+48 695 768 360
+48 661 490 417

biurokinesis@kinesis.com.pl
www.kinesis.com.pl
